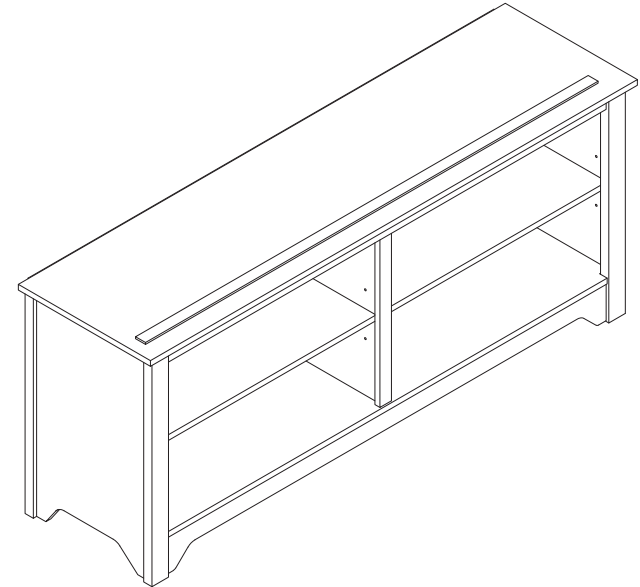


User Manual

JAXPETY



Scan ! To find more surprise!

Model Number: HG61H0982
HG61K0983

JAXPETY | 

You need

1 Tools required

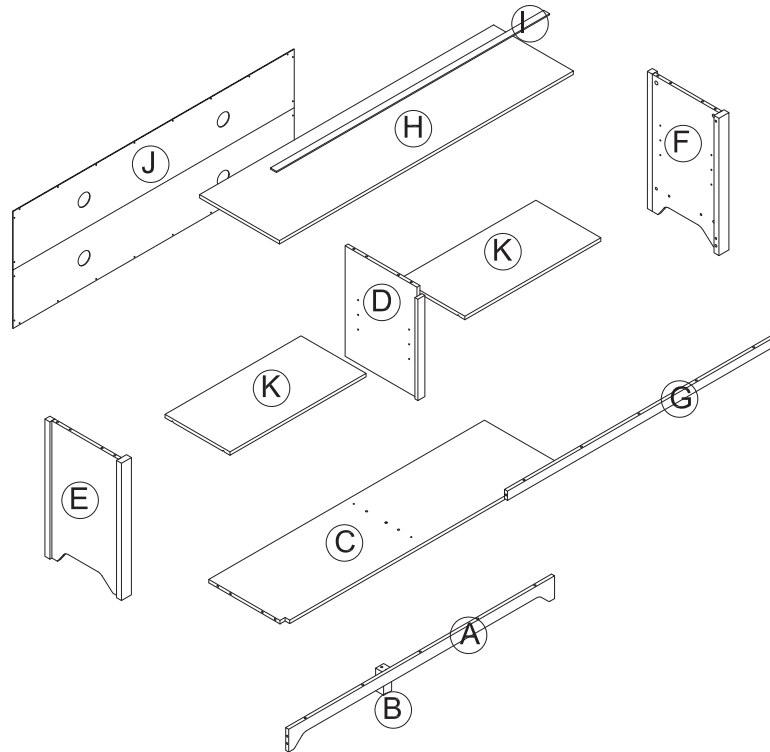
A Phillips head screwdriver is required for the assembly of this product. (not included)

Power tools should not be used to assemble this product.

12 persons are needed

2 Take 60 minutes

60mins



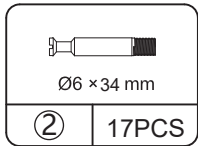
Hardware List

A 1PC	B 1PC	C 1PC	D 1PC
E 1PC	F 1PC	G 1PC	H 1PC
I 1PC	J 1PC	K 2PCS	① 22PCS
② 17PCS	③ 17PCS	④ 24PCS	⑤ 3PCS
⑥ 8PCS	⑦ 1PC	⑧ 8PCS	

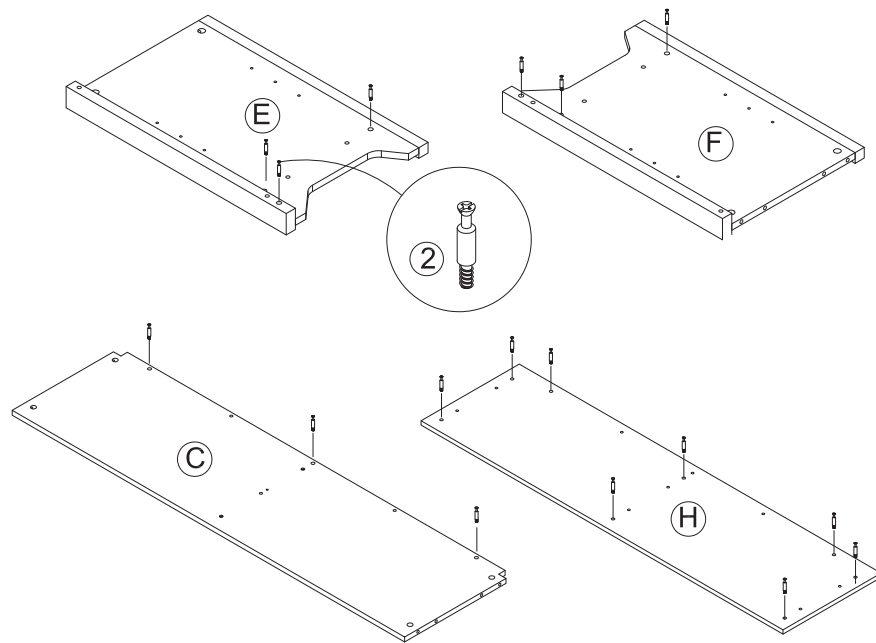
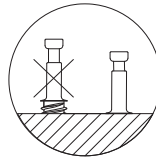
PRODUCT ASSEMBLY

⚠ Check the package contents before getting started !

STEP 1

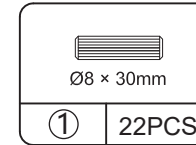


Insert the hardware ② to C/E/F/H part

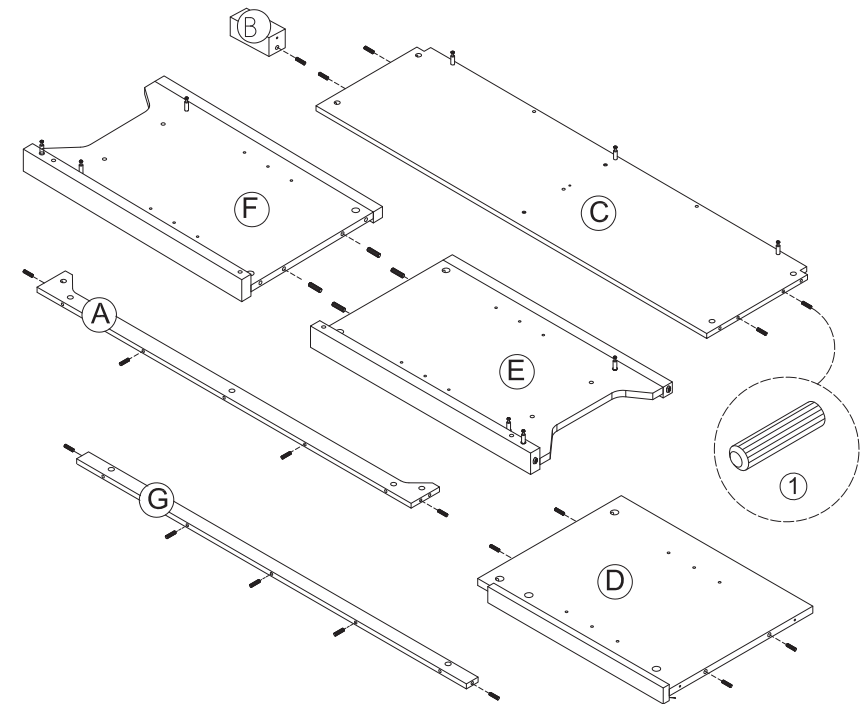


PRODUCT ASSEMBLY

STEP 2


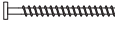



Insert the hardware ① to A/B/C/D/E/F/G part

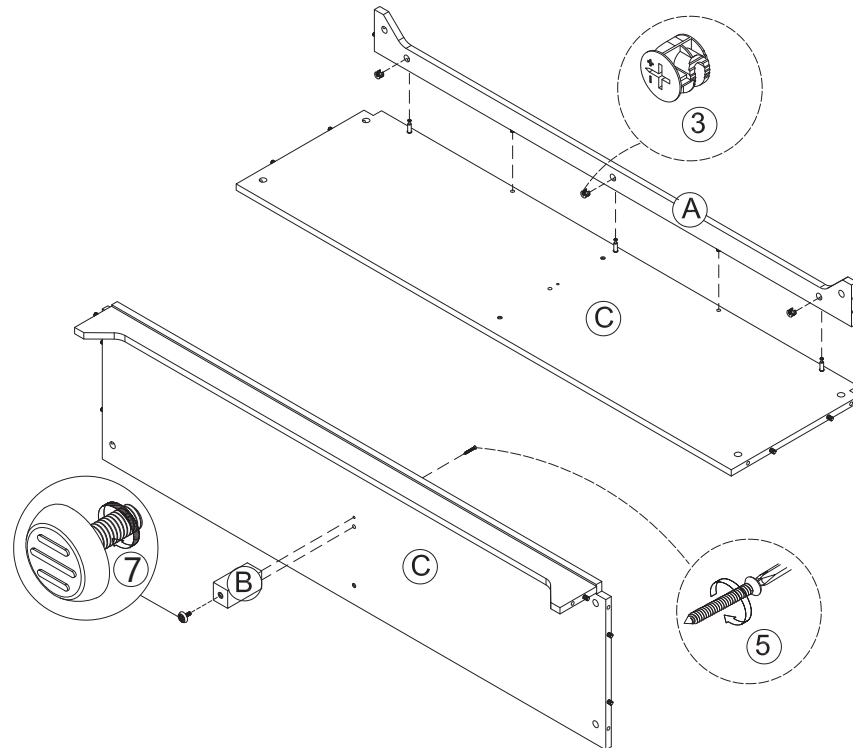


PRODUCT ASSEMBLY

STEP 3


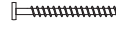
		
Ø15 × 11mm	Ø4.5 × 42mm	
③	⑤	⑦
3PCS	1PC	1PC

Fix the C part to the A part with the hardwaer ③.
Fix the C part to the B part with the hardwaer ⑤ ⑦.

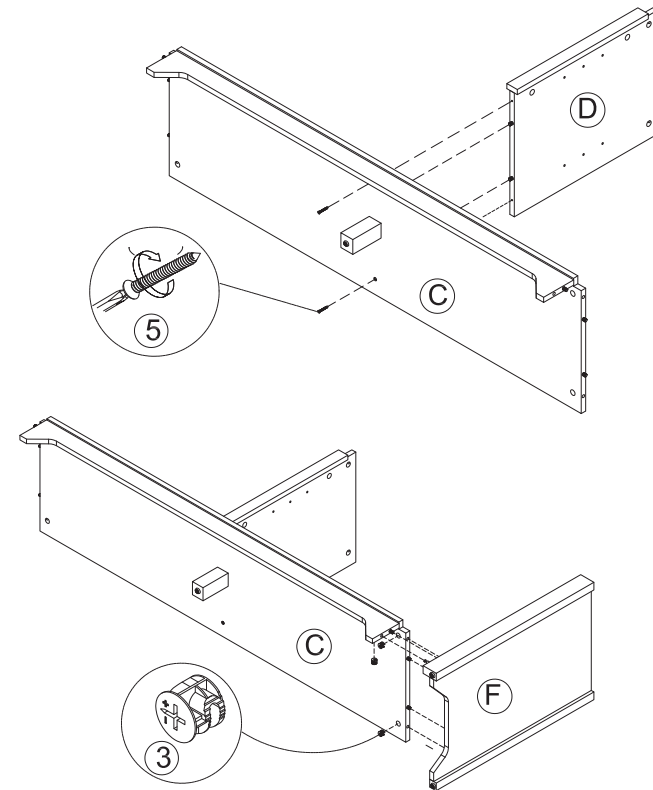


PRODUCT ASSEMBLY

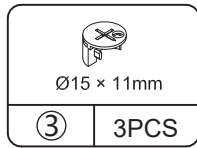
STEP 4

	
Ø15 × 11mm	Ø4.5 × 42mm
③	⑤
3PCS	2PCS

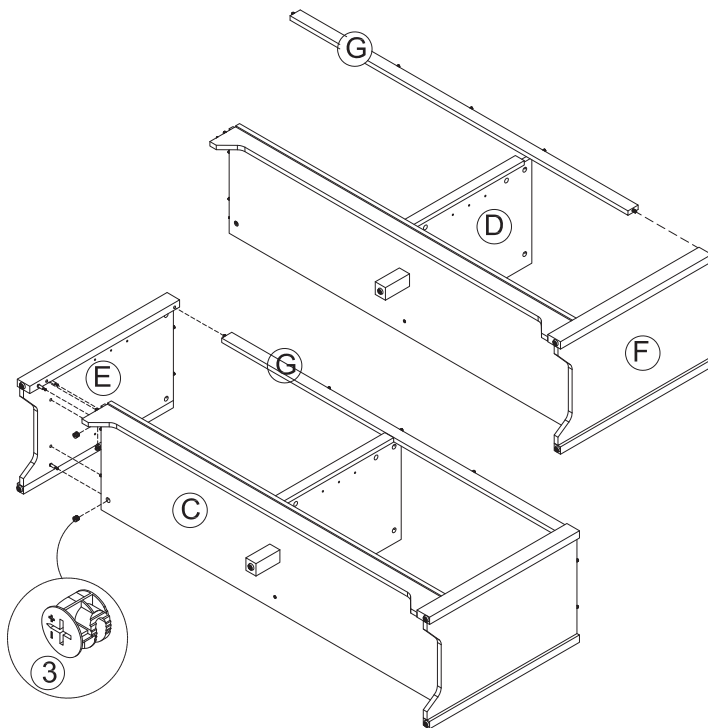
Fix the C part to the D part with the hardwaer ⑤.
Fix the C part to the F part with the hardwaer ③.



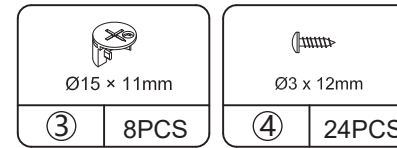
STEP 5



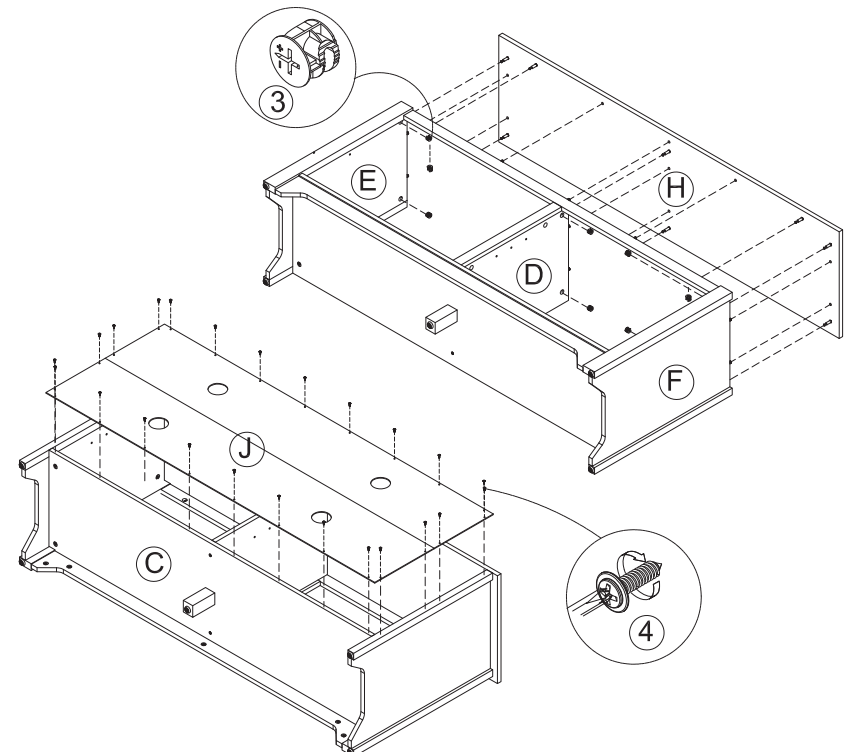
Fix the D\F part to the G part .
Fix the C\G part to the E part with the hardwaer ③ .



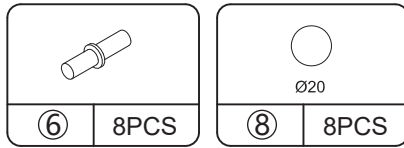
STEP 6



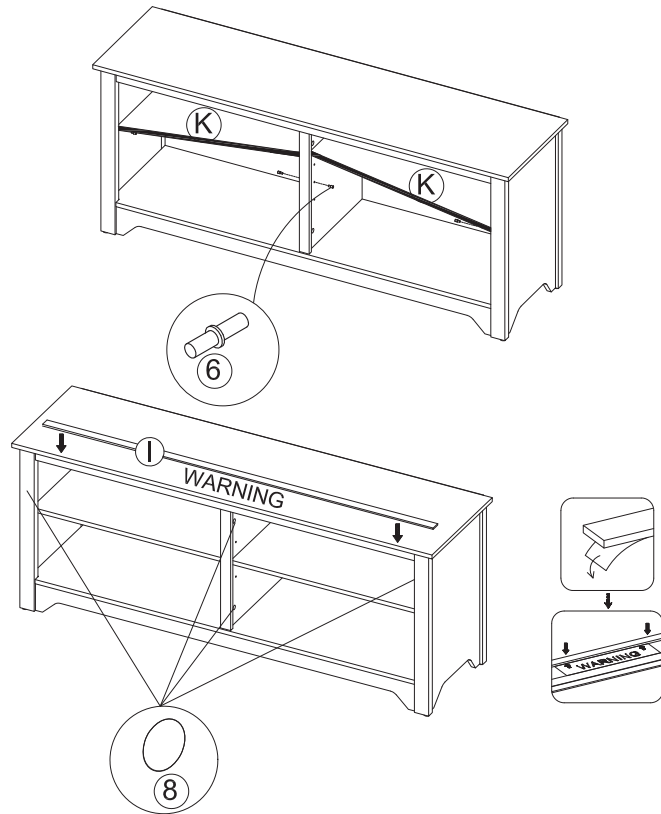
Fix the D\E\F\G part to the H part with the hardwaer ③ .
Fix the C\E\F\H part to the J part with the hardwaer ④ .



STEP 7



Fix the E1F\ part to the K part with the hardware 6 .



Maximum Loads



▲ WARNING

This item is only suitable within the specified maximum load-bearing. Heavier loads than the indicated load capacity may cause instability, resulting in possible injuries.