

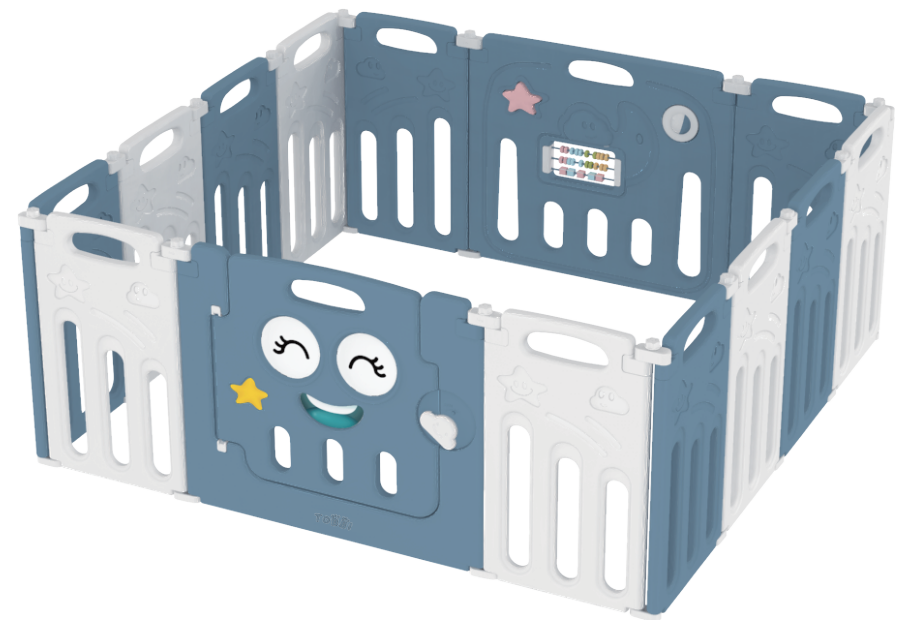
Tips

- 1.This product is only for adult to assemble.
- 2.Place it on a flat and clean floor.
- 3.Use under adult supervision and climbing is prohibited.
- 4.Keep away from fire and power supply.
- 5.Make sure of a wide open site for installation.
- 6.Put the product in a well-lit room.
- 7.Do not put this product in water or near water seepage.
- 8.Can not be used upside down.
- 9.Check all the parts are well connected before use.
- 10.Packing materials are non-toys, please keep them properly.
- 11.Clean the product regularly with sponge, soapy water or other non-corrosive products ensuring a healthy environment for baby.
- 12.Recommended for 3 months – 6 years.

Foldable Baby Safety Playpen Instruction Manual



3M-6Y

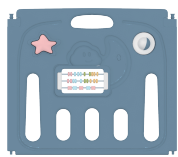


Model Number: TH17Y0462

Playpen Packing Accessories



Door Panel x 1



Game Panel x 1



Small Panel x 12



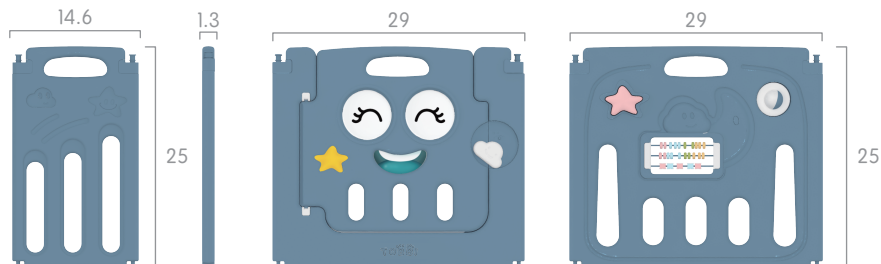
Manual x 1



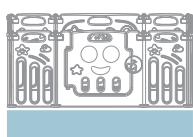
Sticker x 1

Product Size

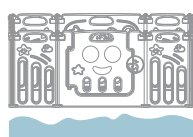
Unit: inch



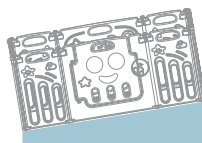
Precautions



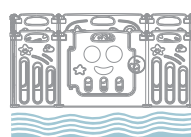
Place on a flat, spacious floor.



Can not be placed in the sand surface, uneven ground



Can not be placed on a slope



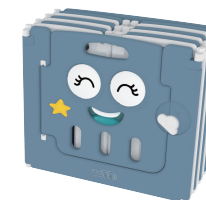
Can not be placed in water or waterseepage.



Product Installation

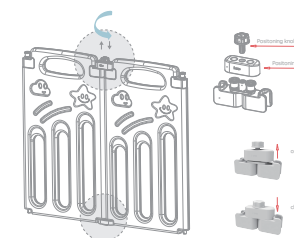
Step 1

Open the packing box and take out the folding fence.



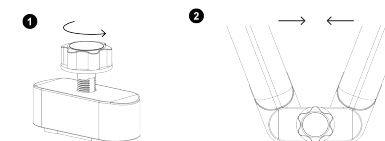
Step 2

Turn the positioning knob and positioning part (up ↑) to adjust the shape as you like, then turn the positioning knob and positioning part (down ↓) to fix the position to keep the shape.



Warning

When folding for storage, please be sure to loose the screw at the top of each joint, then fold it; if fold without loosening in advance, the product will be damaged.



FAQ



1. Make sure that the playpen is not placed on rough surfaces (ex. concrete floor).
 2. Check if there is dirt on the suction cup. Remove dirt with a cloth or water.
 3. (Recommended) If the suction cup becomes non-adhesive after long-term use, immerse it into warm water for 30 minutes. Then install it back after it cools down.
- Tip: Clean the suction cups on a regular basis (ex. once per month) to ensure their adhesiveness.

二折页
展开尺寸：285（长）×210（高）mm；建议材质：128克铜版纸；工艺：四色印刷

Tips

- 1.This product is only for adult to assemble.
- 2.Place it on a flat and clean floor.
- 3.Use under adult supervision and climbing is prohibited.
- 4.Keep away from fire and power supply.
- 5.Make sure of a wide open site for installation.
- 6.Put the product in a well-lit room.
- 7.Do not put this product in water or near water seepage.
- 8.Can not be used upside down.
- 9.Check all the parts are well connected before use.
- 10.Packing materials are non-toys, please keep them properly.
- 11.Clean the product regularly with sponge, soapy water or other non-corrosive products ensuring a healthy environment for baby.
- 12.Recommended for 3 months – 6 years.

Foldable Baby Safety Playpen

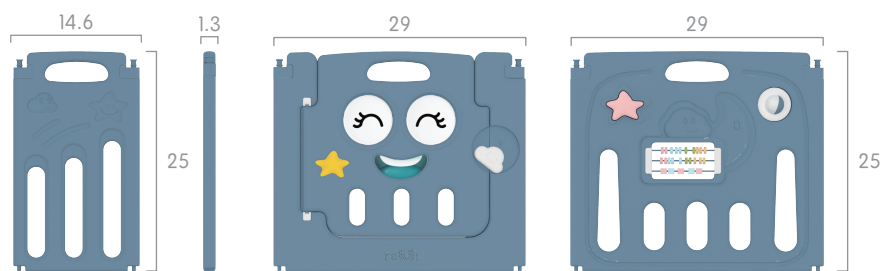


Playpen Packing Accessories

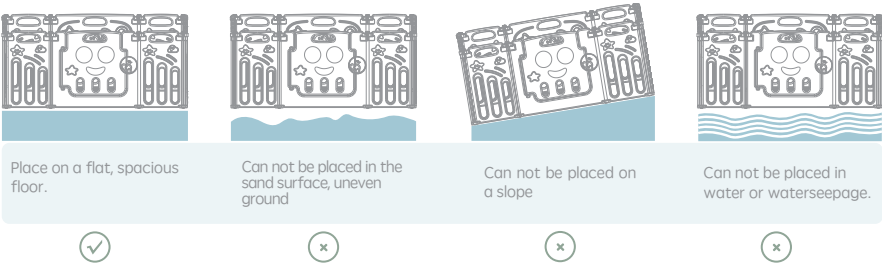


Product Size

Unit: inch



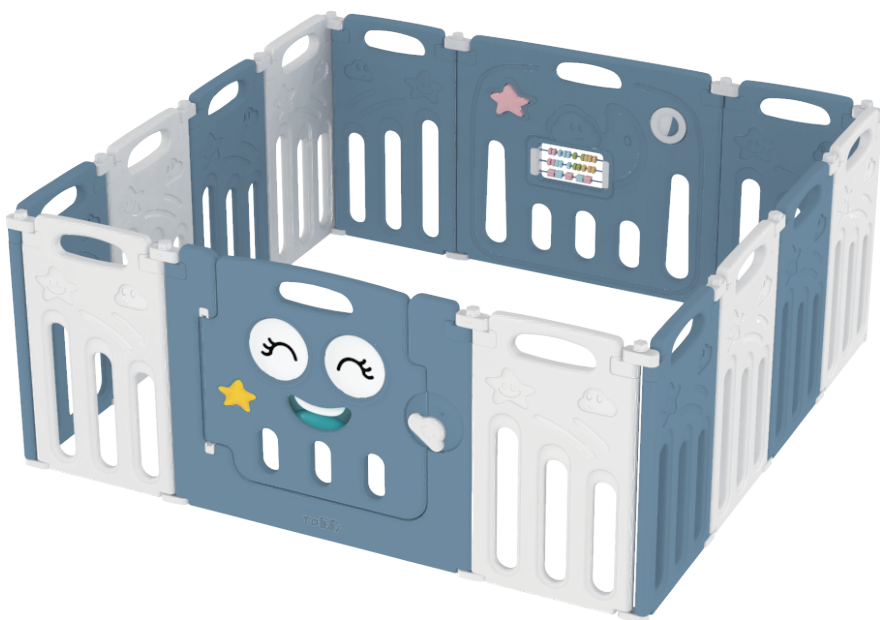
Precautions



Foldable Baby Safety Playpen
Instruction Manual



3M-6Y

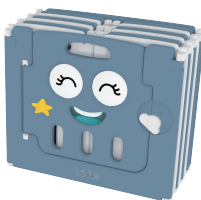


Model Number: TH17Y0462

Product Installation

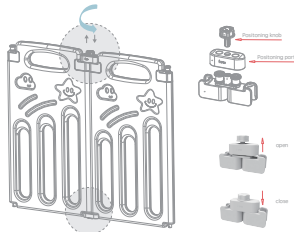
Step 1

Open the packing box and take out the folding fence.



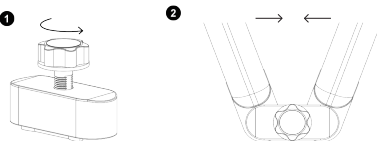
Step 2

Turn the positioning knob and positioning part (up ↑) to adjust the shape as you like, then turn the positioning knob and positioning part (down ↓) to fix the position to keep the shape.



Warning

When folding for storage, please be sure to loose the screw at the top of each joint, then fold it; if fold without loosening in advance, the product will be damaged.



FAQ



1. Make sure that the playpen is not placed on rough surfaces (ex. concrete floor).
 2. Check if there is dirt on the suction cup. Remove dirt with a cloth or water.
 3. (Recommended) If the suction cup becomes non-adhesive after long-term use, immerse it into warm water for 30 minutes. Then install it back after it cools down.
- Tip: Clean the suction cups on a regular basis (ex. once per month) to ensure their adhesiveness.